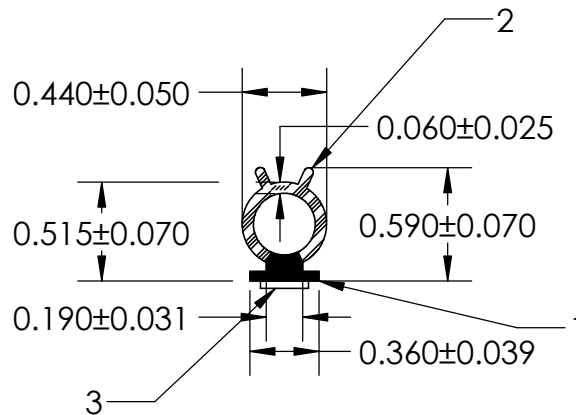
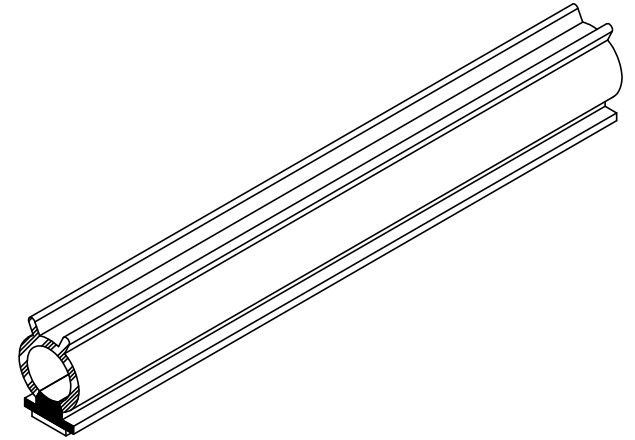


NOTES:

- 1) 60 DUROMETER EPDM DENSE RUBBER (1.200 G/CM<sup>3</sup>)
- 2) CLOSED CELL EPDM SPONGE RUBBER (0.700 G/CM<sup>3</sup>)
- 3) 1/4" ST-1200 3M HEAT ACTIVATED TAPE (0.004 LB/FT)



**UNI-GRIP, INC.**

9823 STATE ROUTE 53 N  
UPPER SANDUSKY, OHIO 43351

REVISION BLOCK				PROPRIETARY AND CONFIDENTIAL:	UNLESS OTHERWISE SPECIFIED:	TITLE:		
REV.	DATE	By	CHANGES MADE	THE INFORMATION CONTAINED IN THIS DRAWING IS THE SOLE PROPERTY OF UNI-GRIP, INC. ANY REPRODUCTION IN PART OR AS A WHOLE WITHOUT THE WRITTEN PERMISSION OF UNI-GRIP, INC. IS PROHIBITED.	DIMENSIONS ARE IN INCHES	DU-193		
A					WEIGHT 0.045 LB/FT			
B					ASTM D1056 2A4	SIZE <b>A</b>	DWG. NO. UG-1-DU-250-TP-193	REV
C					DOCUMENT CONTROL NUMBER UG-1-EN-001-FR-(030123)	ASTM D2000 3BA711 A14 B13 C12 F17		
D								
E								
P:\Engineering\Prints\Master Prints\Dual Durometer\DU-193 UG-1-DU-250-TP-193				SCALE: 1:1	DR. BY C. VENT	DATE 6/28/2023	SHEET 1 OF 1	