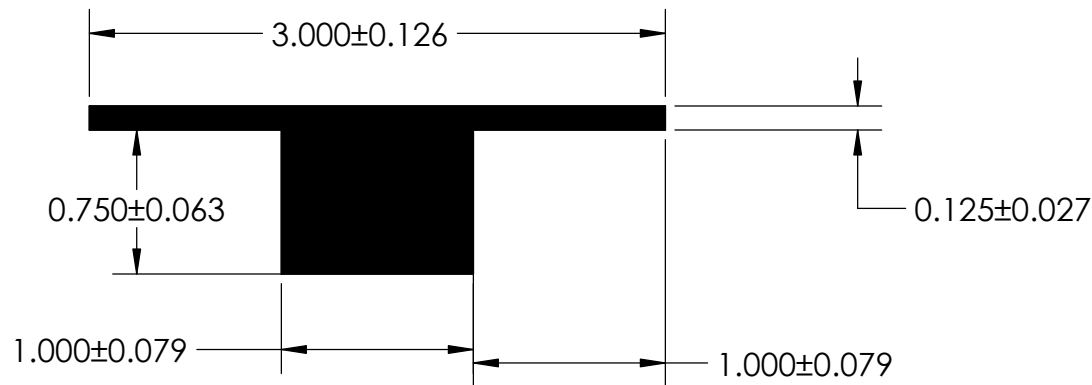
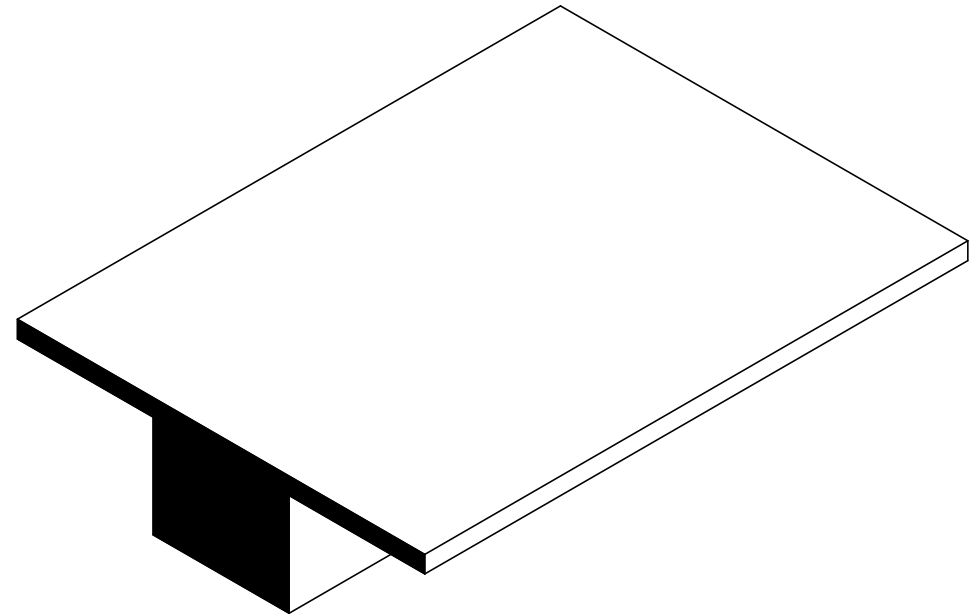


NOTES:

1) CLOSED CELL EPDM SPONGE RUBBER (0.750 G/CM³)



UNI-GRIP, INC.

9823 STATE ROUTE 53 N
UPPER SANDUSKY, OHIO 43351

REVISION BLOCK			
REV.	DATE	APPROVED BY	CHANGES MADE
A	8/10/18	CV	went from 2 3/4 - 3" and 3/4" - 1"
B			
C			
D			
E			

PROPRIETARY AND CONFIDENTIAL:
THE INFORMATION CONTAINED IN THIS DRAWING IS THE SOLE PROPERTY OF UNI-GRIP, INC. ANY REPRODUCTION IN PART OR AS A WHOLE WITHOUT THE WRITTEN PERMISSION OF UNI-GRIP, INC. IS PROHIBITED.

DOCUMENT CONTROL NUMBER
UG-1-EN-001-FR-(111416)

UNLESS OTHERWISE SPECIFIED:
DIMENSIONS ARE IN INCHES
TOLERANCES PER ARPM CLASS 3

WEIGHT
0.291 LB/FT

ASTM D1056
2A4

ASTM D2000
N/A

TITLE:
RE-026

SIZE **A** DWG. NO. UG-1-RE-026 REV **B**