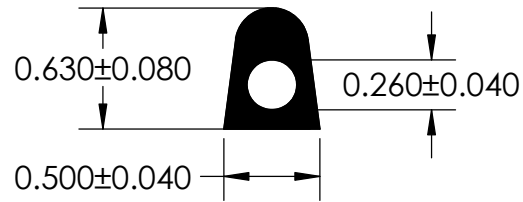
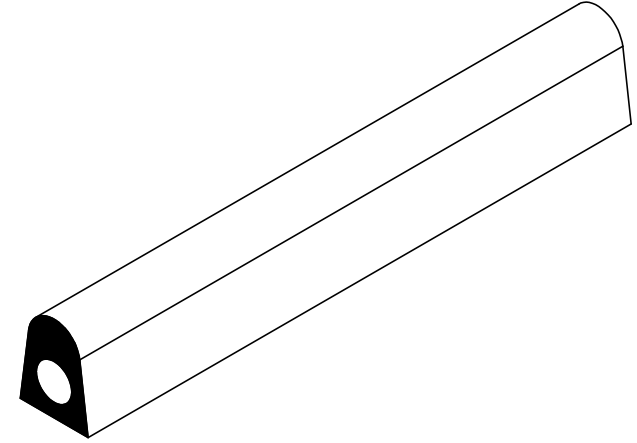


NOTES:

1) CLOSED CELL EPDM SPONGE RUBBER (0.750 G/CM³)



UNI-GRIP, INC.

9823 STATE ROUTE 53 N
UPPER SANDUSKY, OHIO 43351

REVISION BLOCK				PROPRIETARY AND CONFIDENTIAL:	UNLESS OTHERWISE SPECIFIED:	TITLE:					
REV.	DATE	R. By	CHANGES MADE	THE INFORMATION CONTAINED IN THIS DRAWING IS THE SOLE PROPERTY OF UNI-GRIP, INC. ANY REPRODUCTION IN PART OR AS A WHOLE WITHOUT THE WRITTEN PERMISSION OF UNI-GRIP, INC. IS PROHIBITED.	DIMENSIONS ARE IN INCHES TOLERANCES PER ARPM CLASS 2	RE-103					
A						WEIGHT	0.063 LB/FT	SIZE	DWG. NO.	REV	
B					ASTM D1056	2A5	A				UG-1-RE-103
C					DOCUMENT CONTROL NUMBER	ASTM D2000					
D					UG-1-EN-001-FR-(080918)	N/A					
E						DR. BY	C. VENT	DATE	1/28/2021	SHEET 1 OF 1	

P:\Engineering\Prints\Master Prints\Rubber Extrusions\RE-103 UG-1-RE-103

SCALE: 1:1

DR. BY C. VENT

DATE 1/28/2021

SHEET 1 OF 1